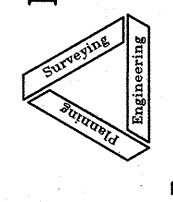


LLA#
**TENTATIVE
 LOT LINE ADJUSTMENT
 FOR
 ED SERMONE**

IN SECTION 36, T.23N., R.13E., M.D.B. & M.
 NORTHERN ADDITION TO PORTOLA
 BLOCK 32, LOTS 10-12
 PLUMAS COUNTY, CALIFORNIA

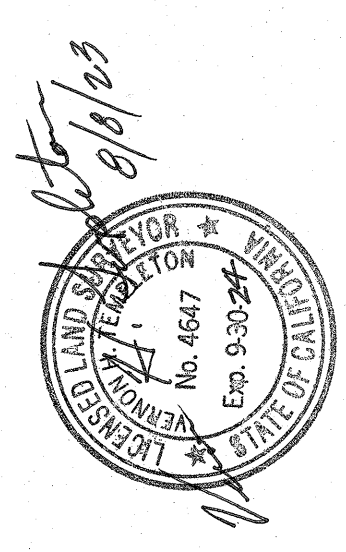
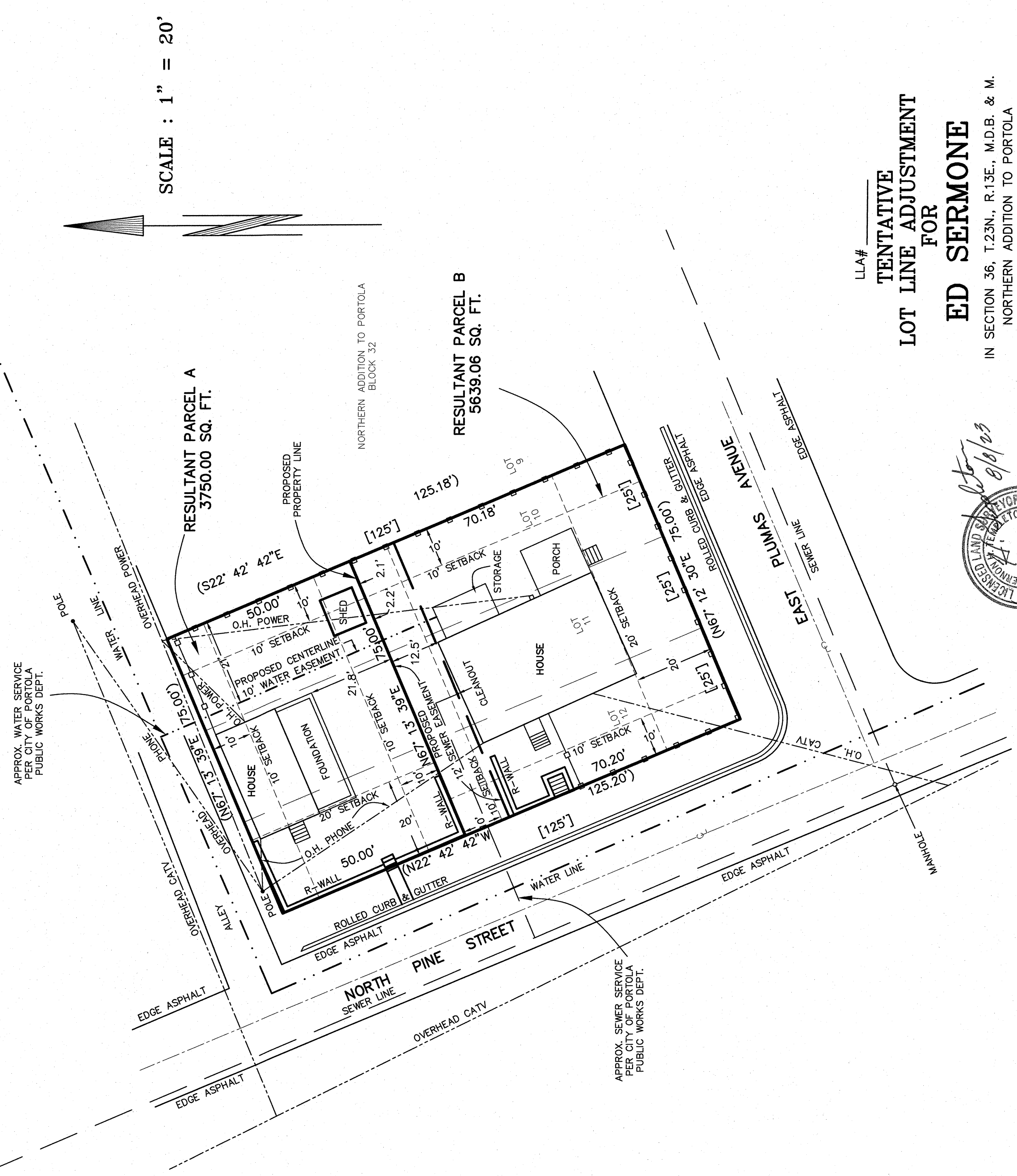
SCALE : 1" = 20'

NST Engineering, Inc.
 1485 Riverside Drive
 Susanville, CA 96130
 (530) 257-5173



APRIL 2023

2023-027



LEGEND

- () RECORD PER 9 RS 48
- [] RECORD PER A MAPS 32
- FENCE

